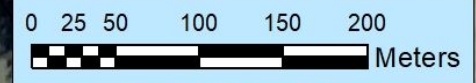


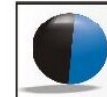
**Legend**

- Portion 21 of Farm 232
- Portion 22 of Farm 232
- Cadastral Boundaries
- Existing Agricultural Lands (Vineyards, Olives & Honeybush Tea)
- Proposed Agricultural Lands
- Botanical Assessment - Sensitive Area
- Perennial Center Line
- Non-Perennial Center Line
- 32m from Non-Perennial Watercourse



**Preferred Site plan and sensitive area as highlighted by the specialist**

Date: 28 March 2022  
 Project No: 1056  
 Drawn By: I. Delport



**HilLand Environmental**  
 Environmental Assessment Practitioners

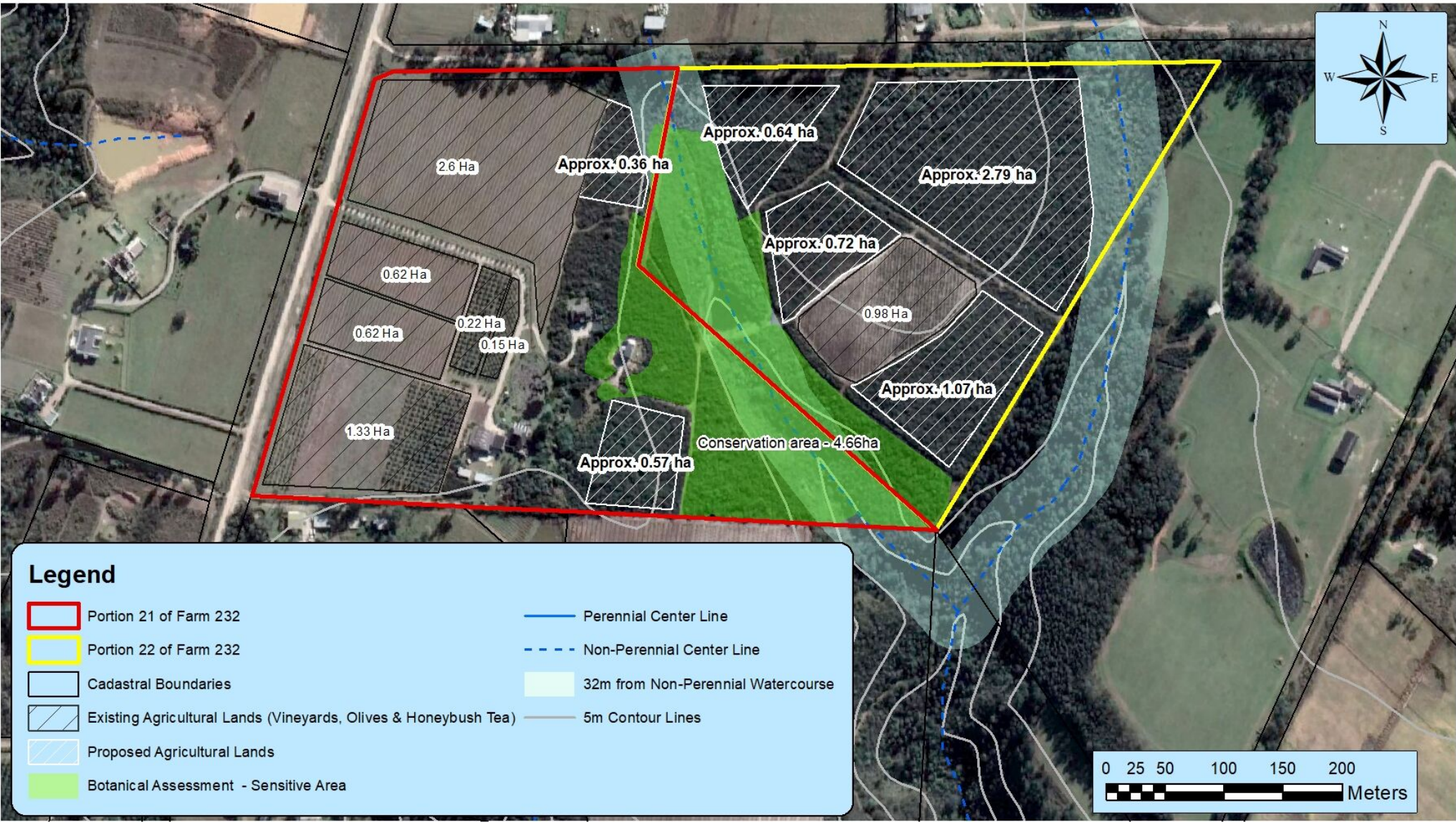
166 Mountview, Victoria Heights  
 P.O. Box 590, GEU-590, 6532  
 Western Cape, South Africa  
 Tel: +27 (0) 44 889 0229  
 Fax: +27 (0) 44 889 0248  
 Mobile: +27 (0) 82 558 6589  
 Email: info@hilland.co.za  
 www.hilland.co.za

Aerial Image - Google Earth 2021  
 Cadastral Image - Surveyor General 2019  
 Watercourses - Surveyor General 2009  
 Sensitive conservation area - Hoare 2022

**Scale:** 1:3,000

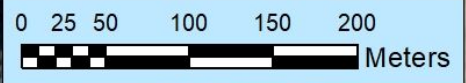
**Projected Coordinate System:** GS\_1984\_UTM\_Zone\_34S

HilLand Environmental (Pty) Ltd  
 166 Mountview Farm, Victoria Heights  
 P.O.Box 590 - George, 6530 - Western Cape - South Africa  
 www.hilland.co.za  
 Mobile:+27 (0) 825586589 - Office: +27 (0) 44 8890229 - Fax: +27 (0)86 5425248



**Legend**

- Portion 21 of Farm 232
- Portion 22 of Farm 232
- Cadastral Boundaries
- Existing Agricultural Lands (Vineyards, Olives & Honeybush Tea)
- Proposed Agricultural Lands
- Botanical Assessment - Sensitive Area
- Perennial Center Line
- Non-Perennial Center Line
- 32m from Non-Perennial Watercourse
- 5m Contour Lines



**Preferred Site plan and sensitive area as highlighted by the specialist**

Date: 28 March 2022  
 Project No: 1056  
 Drawn By: I. Delport

**HilLand Environmental**  
 Environmental Assessment Practitioners

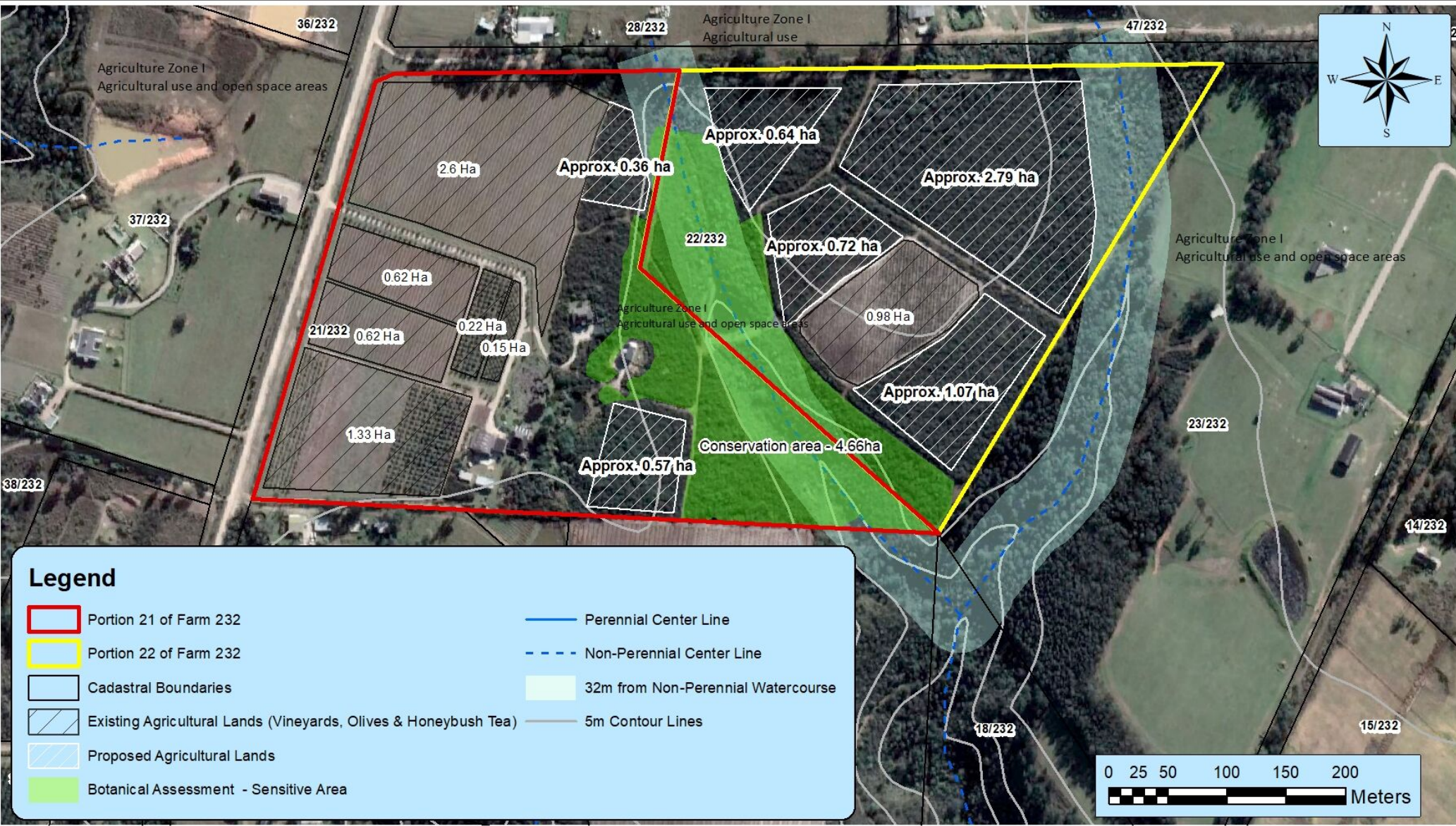
166 Mountview, Victoria Heights  
 P.O. Box 590, GEU-590, 6532  
 Western Cape, South Africa

Tel: +27 (0) 44 889 0229  
 Fax: +27 (0) 86 542 5248  
 Mobile: +27 (0) 82 558 6589  
 Email: info@hilland.co.za  
 www.hilland.co.za

Aerial Image - Google Earth 2021  
 Cadastral Image - Surveyor General 2019  
 Watercourses - Surveyor General 2009  
 Sensitive conservation area - Hoare 2022

**Scale:** 1:3,000  
**Projected Coordinate System:** GS\_1984\_UTM\_Zone\_34S

HilLand Environmental (Pty) Ltd  
 166 Mountview Farm, Victoria Heights  
 P.O.Box 590 - George, 6530 - Western Cape - South Africa  
 www.hilland.co.za  
 Mobile:+27 (0) 825586589 - Office: +27 (0) 44 8890229 - Fax: +27 (0)86 5425248



**Preferred Site plan and sensitive area as highlighted by the specialist**

Aerial Image - Google Earth 2021  
 Cadastral Image - Surveyor General 2019  
 Watercourses - Surveyor General 2009  
 Sensitive conservation area - Hoare 2022

**Scale:** 1:3,000  
**Projected Coordinate System:** GS\_1984\_UTM\_Zone\_34S  
**Prevailing wind direction:** SW-W-NE

Date: 28 March 2022  
 Project No: 1056  
 Drawn By: I. Delport

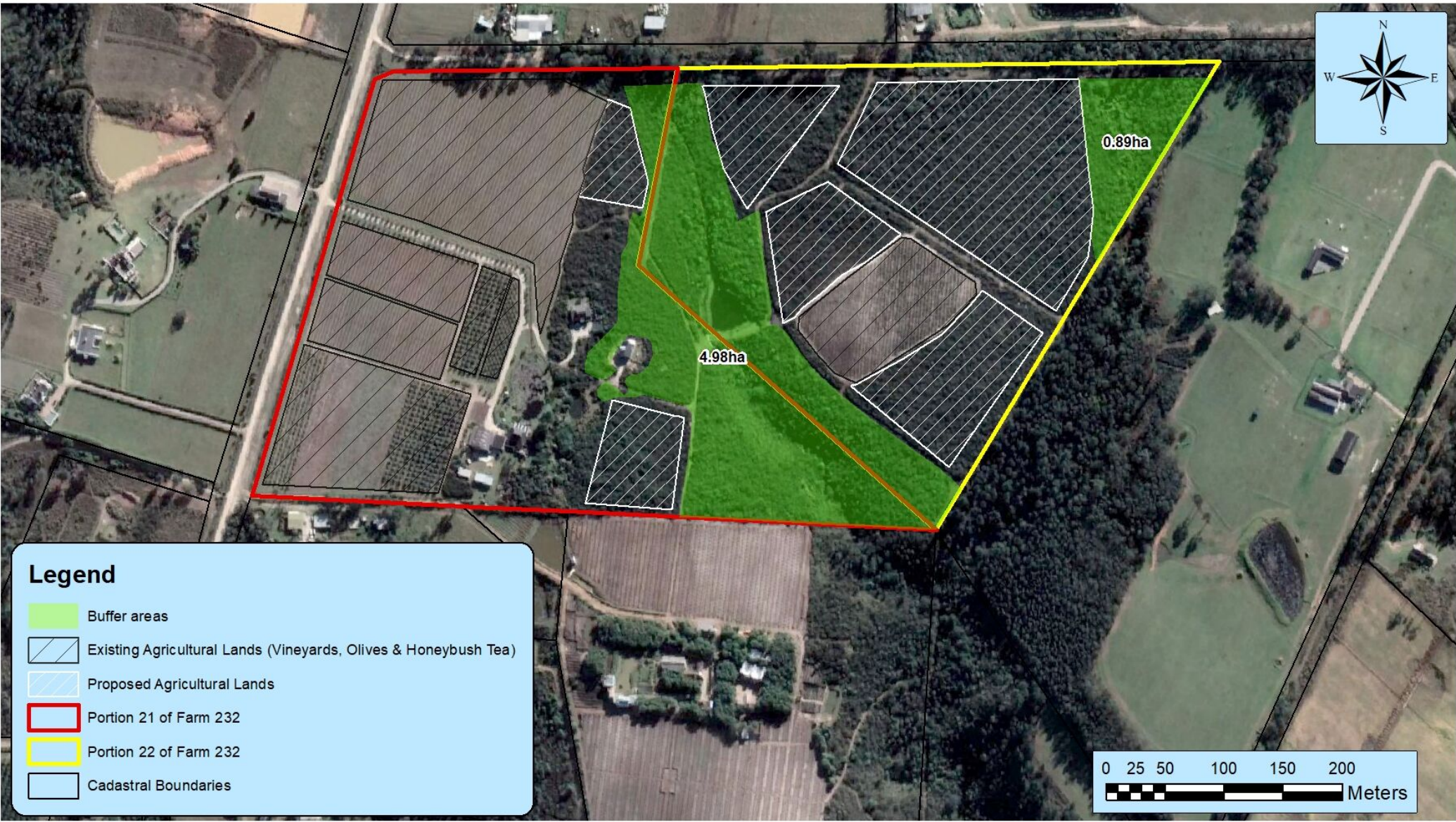


**HilLand Environmental**  
 Environmental Assessment Practitioners

166 Mountview, Victoria Heights  
 P.O. Box 590, GEU-590, 6530  
 Western Cape, South Africa

Tel: +27 (0) 82 890 2229  
 Fax: +27 (0) 86 542 5248  
 Mobile: +27 (0) 82 558 6589  
 Email: info@hilland.co.za  
 www.hilland.co.za

HilLand Environmental (Pty) Ltd  
 166 Mountview Farm, Victoria Heights  
 P.O.Box 590 - George, 6530 - Western Cape - South Africa  
 www.hilland.co.za  
 Mobile:+27 (0) 825586589 - Office: +27 (0) 44 8890229 - Fax: +27 (0)86 5425248



### Legend

- Buffer areas
- Existing Agricultural Lands (Vineyards, Olives & Honeybush Tea)
- Proposed Agricultural Lands
- Portion 21 of Farm 232
- Portion 22 of Farm 232
- Cadastral Boundaries

**Map showing the buffer areas that will be conserved**

Date: 28 March 2022  
Project No: 1056  
Drawn By: I. Delport



**HilLand Environmental**  
Environmental Assessment Practitioners

166 Mountview, Victoria Heights  
P.O. Box 590, GEORGE, 6530  
Western Cape, South Africa  
Tel: +27 (0) 44 889 0229  
Fax: +27 (0) 86 542 5248  
Mobile: +27 (0) 82 558 6589  
Email: info@hilland.co.za  
www.hilland.co.za

Aerial Image - Google Earth 2021  
Cadastral Image - Surveyor General 2019  
Watercourses - Surveyor General 2009  
Sensitive conservation area - Hoare 2022

Scale: 1:3,000  
Projected Coordinate System: **GS\_1984\_UTM\_Zone\_34S**  
Prevailing wind direction: **SW-W-NE**

HilLand Environmental (Pty) Ltd  
166 Mountview Farm, Victoria Heights  
P.O.Box 590 - George, 6530 - Western Cape - South Africa  
www.hilland.co.za  
Mobile:+27 (0) 825586589 - Office: +27 (0) 44 8890229 - Fax: +27 (0)86 5425248