

	METHOD STATEMENT Louis Fourie – Portion 13/14 – Integrated Human Settlement Development Civil Works	DOC NO	RWC-MS-05
		REV	0
		DATE	6.10.2021

Method Statement for Rehabilitation of Ponds & Stormwater Channel between them to ensure silt generation and erosion is avoided in the future

Request on Email send 30 September 2021: Sian Holder Cape EA Prac

1. Complete Outstanding Stormwater Structures as soon as possible.
Gabion structures to be completed & stormwater overflow at Primary Rd no. 7
2. Implement additional silt control measures.

The following main areas will be controlled. Refer to drawing below.

Area/Section	Control Measure
Pond A	Finalise, shape and compact excavated material to reduce silt. Finalise excavated slopes on the perimeter of the pond and import topsoil where required for rehabilitation purposes.
Grass Block Channel Between Ponds	Install sand bags and straw bales to slow down flow of water towards Pond B
Pond B:	Reinstate Sand Bags at Culvert Inlet at Bill Jeffrey Dr. Pond B inlet Complete reno-mattresses. Finalise excavated slopes on the perimeter of the pond and import topsoil where required for rehabilitation purposes.
Remarks	Finalise Remove and Shape all Loose Materials at Stormwater Facilities

METHOD STATEMENT

Louis Fourie – Portion 13/14 – Integrated Human Settlement Development Civil Works

DOC NO

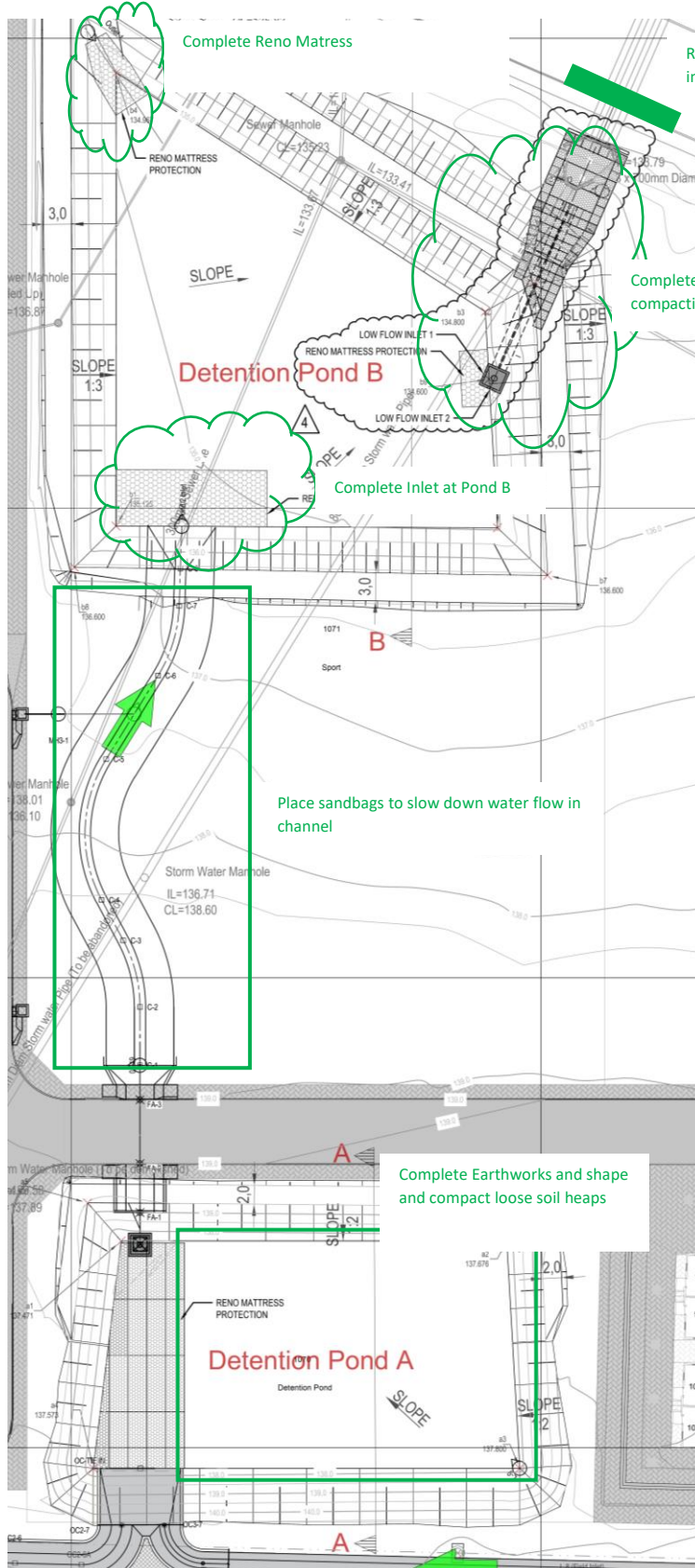
RWC-MS-05

REV

0

DATE

6.10.2021



Complete Reno Matress

Reinstate Sandbags & Straw bales before inlet of culverts at Bill Jeffery

Complete Gabion Structure and compaction around structure ASAP.

Complete Inlet at Pond B

Place sandbags to slow down water flow in channel

Complete Earthworks and shape and compact loose soil heaps