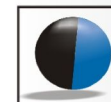


Figure 1d: Site sensitivity map for Cairbrogie proposed resort camps on the Remainder of Farm No.432, Plettenberg Bay

Date: 18 October 2019
 Project No: 955
 Drawn By: I. Delport

Cadastral Imagery - Surveyor General 2019
 Aerial Imagery - Surveyor General 2017
 NFEPA SANBI 2011

Projected Coordinate System: GS_1984_UTM_Zone_34S
 Scale: 1:8,000



HilLand Environmental
 Environmental Assessment Practitioners

166 Mount View, Victoria Heights
 P.O. Box 590, GEORGE, 6530
 Western Cape, South Africa
 Tel: +27(0)44 889 0229
 Fax: +27 (0) 86 542 5248
 Mobile: + 27 (0) 82 5586 589
 E-mail: info@hilland.co.za
 www.hilland.co.za



Legend

- Container units
- Ablution containers (if required)
- Boardwalk
- Parking
- Trenches for services
- Access road
- Development zone - camp area 1
- Farm dam (artificial wetland)
- Remainder of Farm 432
- Cadastral boundaries

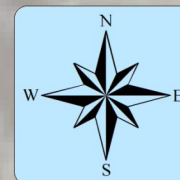
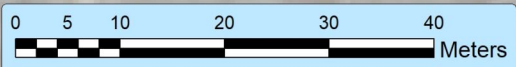


Figure 1a: Indicative site layout for camp area 1 on Cairnbrogie, the Remainder of Farm No. 432, Plettenberg Bay

Date: 17 September 2019
 Project No: 955
 Drawn By: I. Delpont

Cadastral Imagery - Surveyor General 2019
 Aerial Imagery - Surveyor General 2017
 NFEPA Data SANBI 2011

Projected Coordinate System: GS_1984_UTM_Zone_34S
 Scale: 1:234



HilLand Environmental
 Environmental Assessment Practitioners

166 Mount View, Victoria Heights
 P.O. Box 590, GEORGE, 6530
 Western Cape, South Africa
 Tel: +27(0)44 889 0229
 Fax: +27(0) 86 542 5248
 Mobile: + 27 (0) 82 5586 589
 E-mail: info@hilland.co.za
 www.hilland.co.za

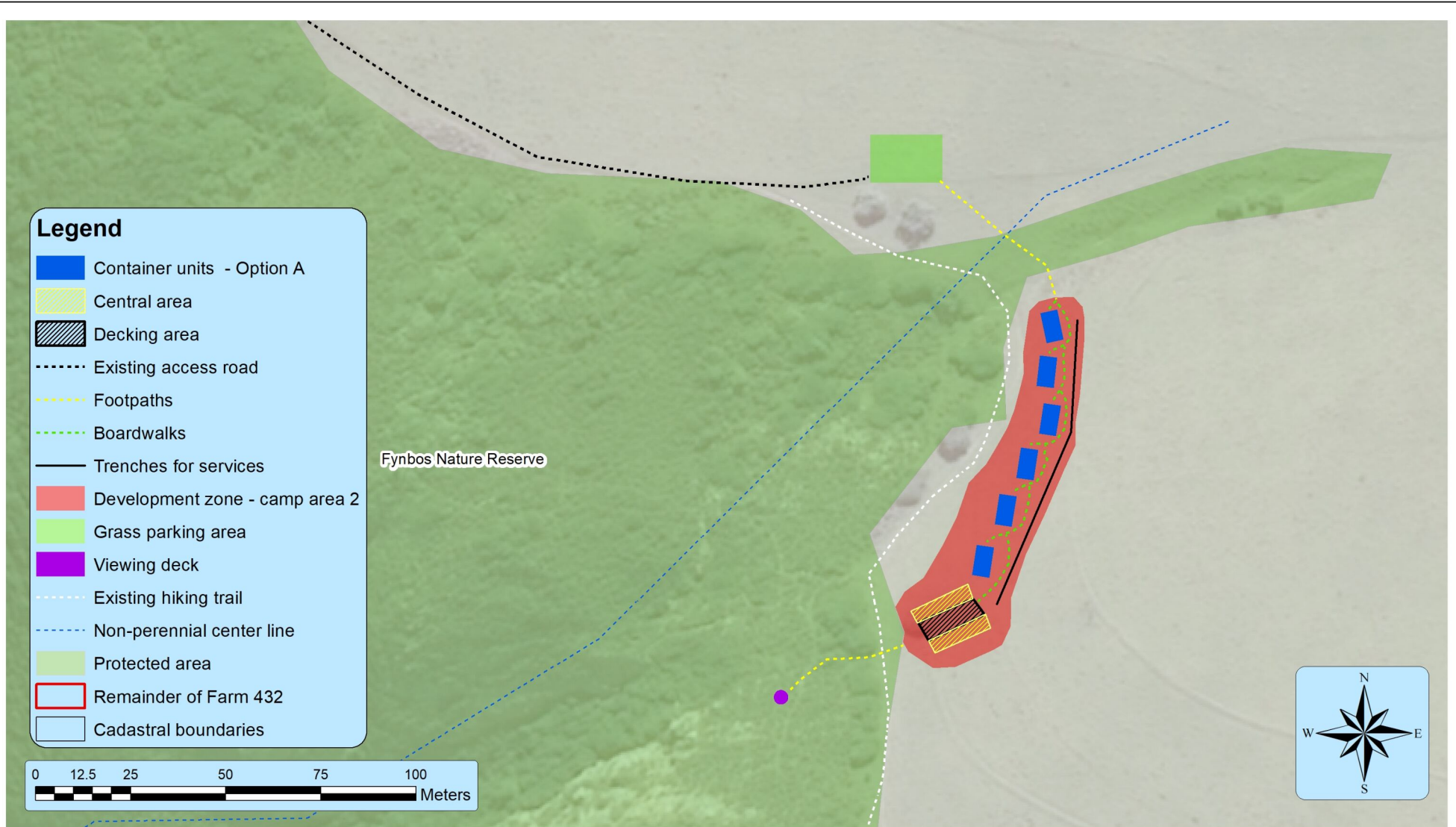
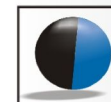


Figure 1b: Indicative site layout for option A for camp area 2 on Cairnbrogie, the Remainder of Farm No. 432, Plettenberg Bay

Date: 17 September 2019
 Project No: 955
 Drawn By: I. Delpont

Cadastral Imagery - Surveyor General 2019
 Aerial Imagery - Surveyor General 2017

Projected Coordinate System: GS_1984_UTM_Zone_34S
 Scale: 1:479



HilLand Environmental
 Environmental Assessment Practitioners

166 Mount View, Victoria Heights
 P.O. Box 590, GEORGE, 6530
 Western Cape, South Africa
 Tel: +27 (0) 44 889 0229
 Fax: +27 (0) 86 542 5248
 Mobile: +27 (0) 82 5586 589
 E-mail: info@hilland.co.za
 www.hilland.co.za

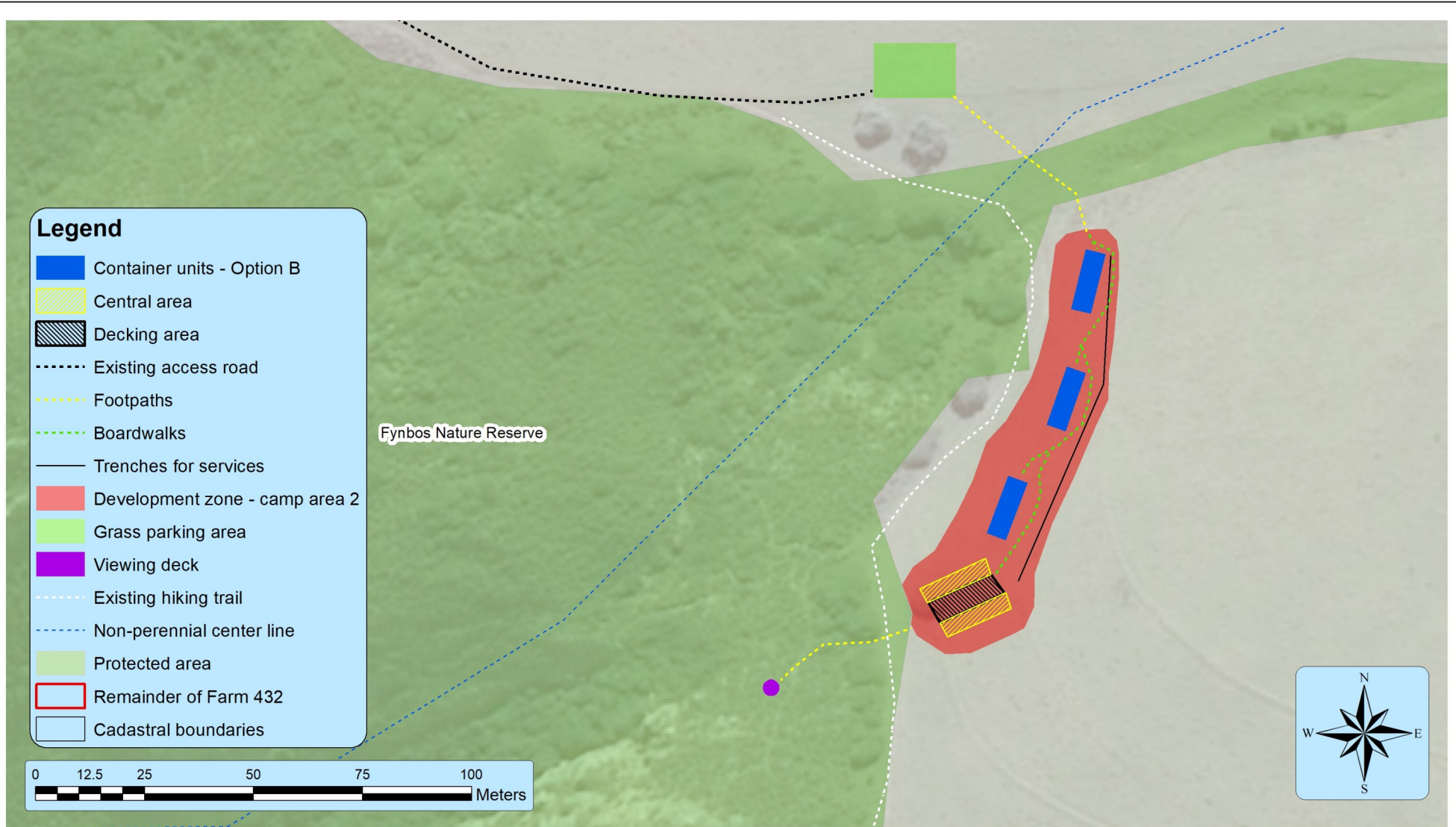


Figure 1c: Indicative site layout for option B for camp area 2 on Cairnbrogie, the Remainder of Farm No. 432, Plettenberg Bay

Date: 17 September 2019
 Project No: 955
 Drawn By: I. Delpont

Cadastral Imagery - Surveyor General 2019
 Aerial Imagery - Surveyor General 2017

Projected Coordinate System: GS_1984_UTM_Zone_34S
 Scale: 1:418



HilLand Environmental
 Environmental Assessment Practitioners

166 Mount View, Victoria Heights
 P.O. Box 590, GEORGE, 6530
 Western Cape, South Africa
 Tel: +27(0)44 889 0229
 Fax: +27(0) 86 542 5248
 Mobile: + 27 (0) 82 5586 589
 E-mail: info@hilland.co.za
 www.hilland.co.za