

From: Waseefa Dhansay <Waseefa.Dhansay@westerncape.gov.za>
Sent: Wednesday, 07 August 2024 10:36
To: environmental2@hilland.co.za
Cc: 'cathy'
Subject: RE: 1281 - Outeniqua Views, Erf 19741, Dana Bay

Follow Up Flag: Follow up
Flag Status: Completed

Deare Inge

My sincere apologies for the oversight and delay.

The changes to the SDP are supported as being substantially in accordance to the ROD dated 5 October 2006. No additional submission is required to be submitted to HWC.

[HWC Committee Schedule 2024](#)

Kind regards

Waseefa Dhansay
Assistant Director: Professional Services

Heritage Resource Management Services
Protea Assurance Building Greenmarket Square, Cape Town

Website: www.hwc.org.za / www.westerncape.gov.za



From: environmental2@hilland.co.za <environmental2@hilland.co.za>
Sent: Friday, August 2, 2024 10:41 AM
To: Waseefa Dhansay <Waseefa.Dhansay@westerncape.gov.za>
Cc: 'cathy' <cathy@hilland.co.za>
Subject: RE: 1281 - Outeniqua Views, Erf 19741, Dana Bay

Morning Waseefa

Hope you are doing well

I'm just following up on the letter / confirmation for Erf 19741, I'm not sure if you sent it already and I missed it?

Thank you in advance

Kind regards/ Vriendelike groete,

Inge Delpont
EAPASA Registered (2019/1689)

HilLand Environmental (Pty) Ltd
166 Mountview Farm, Victoria Heights
P.O.Box 590 - George, 6530 - Western Cape - South Africa
www.hilland.co.za
Mobile:+27 (0) 825259995 - Office: +27 (0) 44 8890229 - Fax: +27 (0)86 5425248



From: environmental2@hilland.co.za environmental2@hilland.co.za
Sent: Monday, April 22, 2024 5:04 PM
To: 'Waseefa Dhansay' Waseefa.Dhansay@westerncape.gov.za
Cc: 'cathy' cathy@hilland.co.za
Subject: RE: 1281 - Outeniqua Views, Erf 19741, Dana Bay

Hi Waseefa,

Hope you are well.

Attached please find the report as discussed on Friday

Have a lovely day

Kind regards/ Vriendelike groete,

Inge Delpont

EAPASA Registered (2019/1689)

HillLand Environmental (Pty) Ltd

166 Mountview Farm, Victoria Heights

P.O.Box 590 - George, 6530 - Western Cape - South Africa

www.hilland.co.za

Mobile:+27 (0) 825259995 - Office: +27 (0) 44 8890229 - Fax: +27 (0)86 5425248



From: environmental2@hilland.co.za <environmental2@hilland.co.za>

Sent: Friday, April 19, 2024 2:23 PM

To: 'Waseefa Dhansay' <Waseefa.Dhansay@westerncape.gov.za>

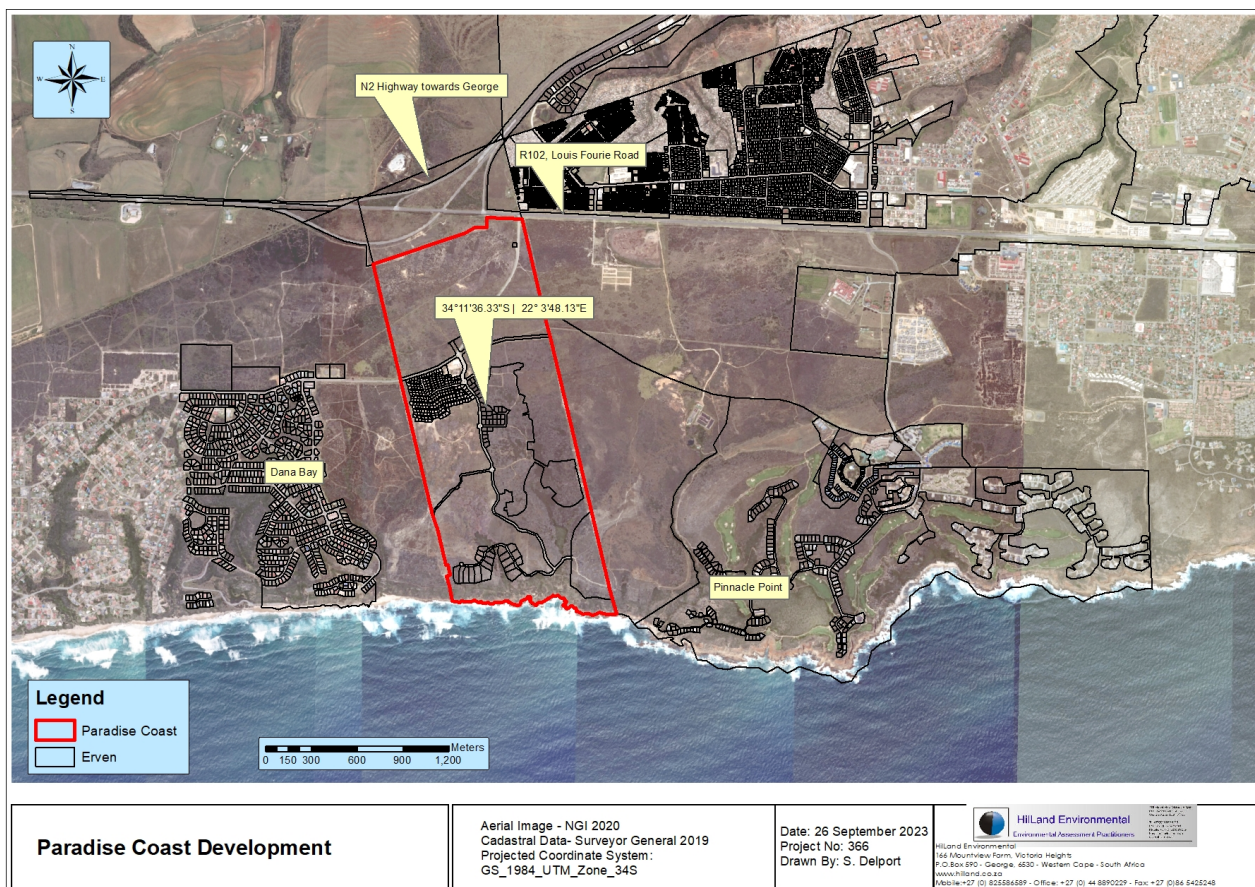
Cc: 'cathy' <cathy@hilland.co.za>

Subject: RE: 1281 - Outeniqua Views, Erf 19741, Dana Bay

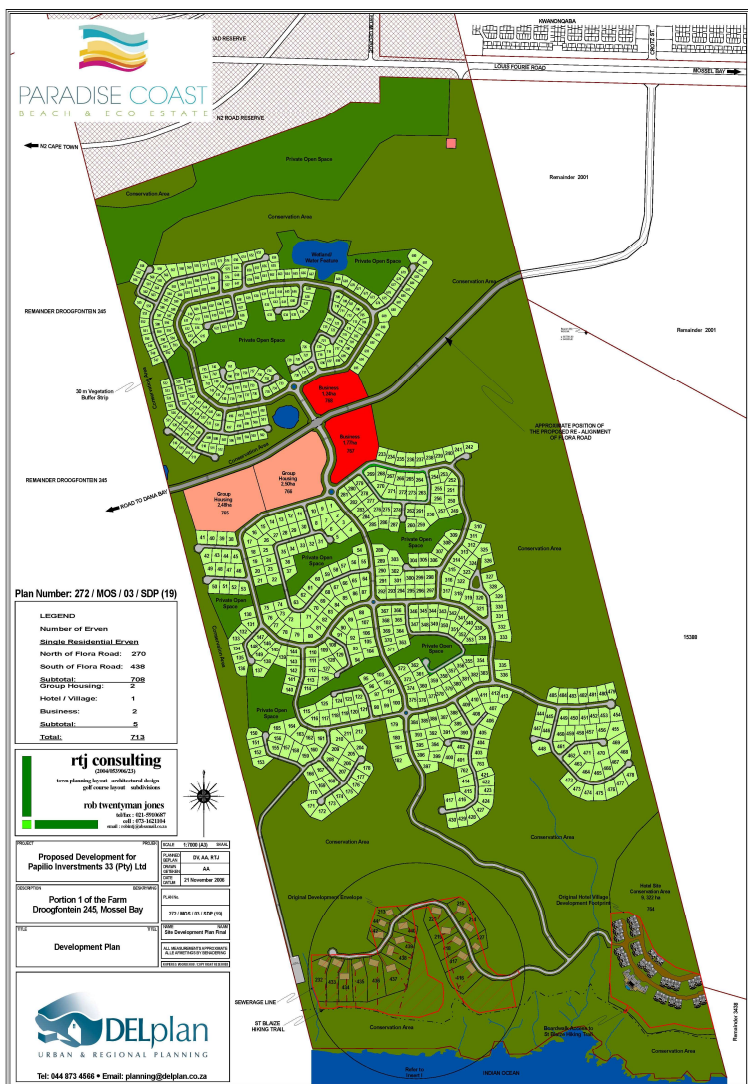
Hi Waseefa,

Hope you are doing well.

Erf 19741 forms part of the northern part of the approved Paradise Coast development in Dana Bay.



Locality map of Paradise Coast



Approved SDP of Paradise Coast



Extract from the SDP showing the approved northern section layout

The erf has been sold and the new owners have made some changes to the SDP which will be subject to an Amendment Application. The new SDP includes densification within the same footprint area as approved.



Proposed new SDP

Paradise Coast has an existing HWC ROD in place dated 5 October 2006 (see attached for ease of reference). The recommendations provided in the ROD are being implemented at current construction activities. For the amendment application,

will the submission of an NID be required or can we include in the application that the recommendations provided in the ROD remain valid and need to be implemented?

Thank you in advance

Have a lovely day

Kind regards/ Vriendelike groete,

Inge Delport

EAPASA Registered (2019/1689)

HillLand Environmental (Pty) Ltd

166 Mountview Farm, Victoria Heights

P.O.Box 590 - George, 6530 - Western Cape - South Africa

www.hilland.co.za

Mobile:+27 (0) 825259995 - Office: +27 (0) 44 8890229 - Fax: +27 (0)86 5425248



 Virus-free. www.avast.com

"All views or opinions expressed in this electronic message and its attachments are the view of the sender and do not necessarily reflect the views and opinions of the Western Cape Government (the WCG). No employee of the WCG is entitled to conclude a binding contract on behalf of the WCG unless he/she is an accounting officer of the WCG, or his or her authorised representative. The information contained in this message and its attachments may be confidential or privileged and is for the use of the named recipient only, except where the sender specifically states otherwise. If you are not the intended recipient you may not copy or deliver this message to anyone."