

Legend

- Erf 19741
- Cadastral Boundaries
- CBA 1 - Natural, Terrestrial
- CBA 2 - Degraded
- ONA

Critical Biodiversity-, Ecological Support- and Other Natural Areas (CBA, ESA & ONA)

Aerial Image - Surveyor General 2016
 Cadastral Image - Surveyor General 2016
 Projected Coordinate System: GS_1984_UTM_Zone_34S
 CBA ESA and ONA data - WCSP, SANBI 2017

Date: 02 August 2024
 Project No: 1281
 Drawn By: I. Delport

Hill and Environmental
 Environmental & Geospatial Professionals

Hill and Environmental
 1st Mountain View Farm, Victoria Height
 P.O. Box 890 - George, 6530 - Western Cape - South Africa
 www.hilland.co.za
 Mobile: +27 (0) 623366087 - Office: +27 (0) 44 8890229 - Fax: +27 (0) 6236 5432348



Legend

- Erf 19741
- Cadastral Boundaries
- NBA 2021 - Original Extent**
- Hartenbos Dune Thicket (EN)
- North Langeberg Sandstone Fynbos (LC)

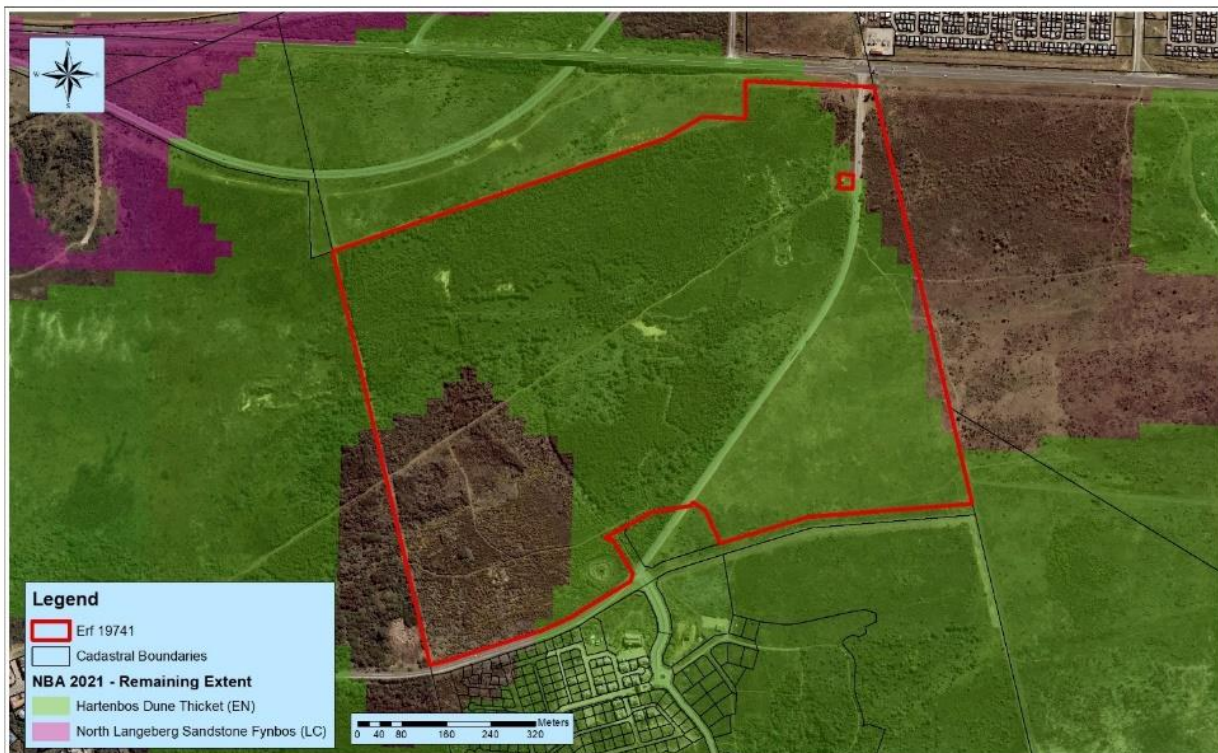
National Biodiversity Areas (NBA) showing the original extent of threatened ecosystems

Aerial Image - Surveyor General 2016
 Cadastral Image - Surveyor General 2016
 Projected Coordinate System: GS_1984_UTM_Zone_34S
 NBA data - WCSP, SANBI 2022

Date: 02 August 2024
 Project No: 1281
 Drawn By: I. Delport

Hill and Environmental
 Environmental & Geospatial Professionals

Hill and Environmental
 1st Mountain View Farm, Victoria Height
 P.O. Box 890 - George, 6530 - Western Cape - South Africa
 www.hilland.co.za
 Mobile: +27 (0) 623366087 - Office: +27 (0) 44 8890229 - Fax: +27 (0) 6236 5432348



National Biodiversity Areas (NBA) showing the remaining extent of threatened ecosystems

Aerial Image - Surveyor General 2016
 Cadastral Image - Surveyor General 2016
 Projected Coordinate System: GS_1984_UTM_Zone_34S
 NBA data - WCBSF, SANBI 2022

Date: 02 August 2024
 Project No: 1281
 Drawn By: I. Delpoit

HILL and Environmental
 Environmental & Planning Consultants

120 Montrose Road, 1630 Springs
 P.O. Box 890 - George, 6530 - Western Cape - South Africa
 phone: 023 212 1111
 Mobile: +27 (0) 82 308 6087 - Office +27 (0) 41 8870229 - Fax: +27 (0) 82 308 5432/348